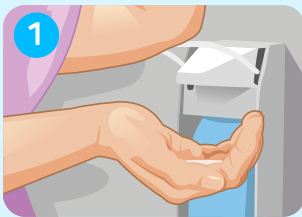
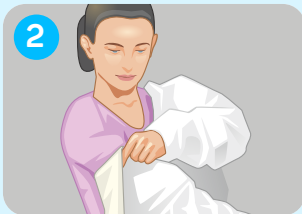


Donning and doffing personal protective equipment in the right order:

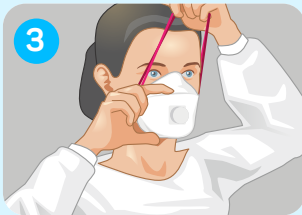
Donning protective equipment



1. Disinfect hands.



2. Put on protective gown. Make sure that the body is completely covered from the neck to the knees and wrists!



3. Don face mask. Mask must fit tightly.



4. Put on safety glasses.



5. Don gloves and pull them over the sleeve cuffs.

Doffing protective equipment



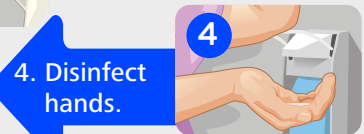
1. Remove gloves and discard them in a closed waste container.



2. Disinfect hands.



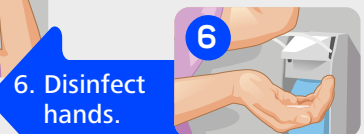
3. Take off protective gown. Pull arms out of gown first. Fold the gown with the contaminated side facing inwards and discard it in the closed waste container.



4. Disinfect hands.



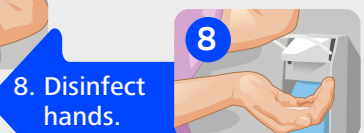
5. Remove safety glasses. Hold both earpieces and take it off.



6. Disinfect hands.



7. Take off face mask and discard it in a closed waste container.



8. Disinfect hands.

(EN 10.21)

References:

Centers for Disease Control and Prevention (CDC). Posters: Sequence for Donning and Removing Personal Protective Equipment. <https://www.cdc.gov/hai/pdfs/ppe/ppe-sequence.pdf> (last accessed 11/17/2021)

Reska, M. et al. Persönliche Schutzausrüstung an- und ausziehen - Schritt für Schritt. Krankenhaushygiene up2date 2017; 12: 117-122.

